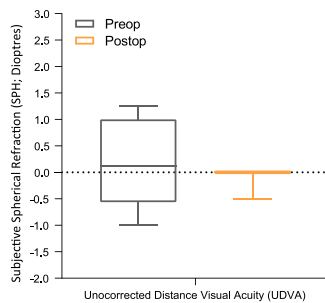


## PERSONALIZED SOLUTIONS TO LAND YOUR PATIENTS IN THEIR VISUAL COMFORT ZONE

We proudly introduce the **1stQ AddOn®** supplementary intraocular lens family designed to help you bring your patients with different optical needs back into their visual comfort zone.

### One goal – personalized solutions

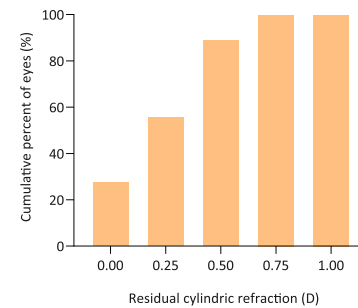
#### Refractive correction



##### Almost zero residual refraction

Refractive outcomes are predictable. All eyes result in or close to the desired target refraction. Previous refractive surprises can be corrected, potential future surprises managed with a planned two-step approach.<sup>1</sup>

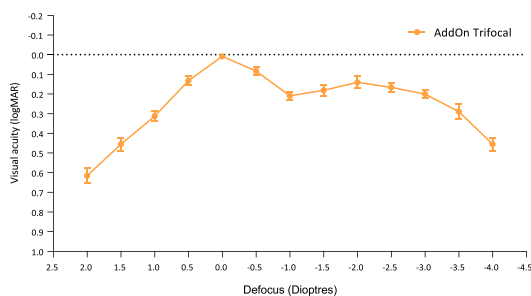
#### Astigmatism correction



##### Efficient astigmatism-correction

The 1stQ AddOn® Toric supplementary IOLs ensure excellent cylindrical correction. The majority of eyes (89%) had residual refractive astigmatism  $\leq 0.50$  D, and all eyes (100%) were within 0.75 D.<sup>2</sup>

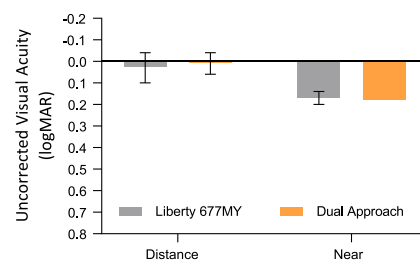
#### Trifocal upgrade



##### Chance for spectacle-free vision

Your pseudophakic patients with monofocal capsular bag IOLs can also experience the comfort and liberty of spectacle independence: the **1stQ AddOn® Trifocal** lenses ensure excellent vision at all distances.<sup>1</sup>

#### Planned Dual Procedure



##### Plan safe – Reversible multifocality

Do you wish to have more options when deciding on multifocality?

Why don't you consider the implantation of a **monofocal capsular bag IOL together with a trifocal AddOn®?**

Refractive outcomes are identical with that achieved with a trifocal capsular bag IOL. With the option of reversibility, more patients can be included in the Trifocal patient pool.<sup>3</sup>

## Challenging cases -

### You can count on the 1stQ AddOn®

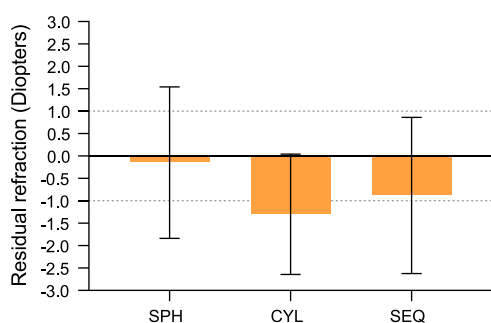
Predictable IOL-calculations are challenging in case of patients who had previously undergone corneal refractive surgery, or any types of corneal procedures in the past.

In these cases refractive surprises occur more frequently. With the 1stQ AddOn® the management of these cases becomes **highly predictable through a two-step procedure** where the optical fine tuning is performed in the second step with the standardised implantation of the 1stQ AddOn®.

The 1stQ AddOn® proved to be also effective in special indications for pseudophakic patients, like correcting high cylindrical errors after penetrating keratoplasty or compensating the hyperopic shift after PPV.

### 1stQ AddOn® - The swiss knife in the surgeons' hand

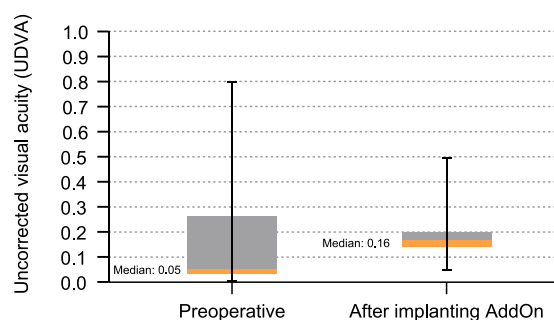
#### Post-PKP correction



#### Minimal residual refraction

The average residual refractive (SPH) and cylindric error (CYL), along with the spherical equivalent refraction (SEQ) is usually within 1.00 D from the target refraction – even in case of PKP-patients, where choosing the optimal IOL-power is often challenging, and outcomes are less predictable.<sup>5</sup>

#### Temporary optical compensation



#### Compensation of hyperopic shift after PPV

Silicone oil tamponade after pars plana vitrectomy (PPV) is known to cause a hyperopic shift of about five diopters, which leads to the well described challenges to achieve acceptable binocular vision after the surgery. The 1stQ AddOn® IOLs offers a simple and reversible solution to compensate the refractive changes during this transitional period.<sup>6</sup>

#### Further reading:

**1. Palomino-Bautista C,** Sánchez-Jean R, Carmona Gonzales D, Romero Domínguez M, Castillo Gómez A. Spectacle independence for pseudophakic patients – Experience with a trifocal supplementary add-on intraocular lens. *Clin Ophthalmol.* 2020; 14:1043–1054. **2. Gundersen KG,** Potvin R. Refractive and visual outcomes after implantation of a secondary toric sulcus intraocular lenses. *Clin Ophthalmol.* 2020; 14:1337–1342. **3. Harrisberg B.** Comparison of refractive and visual outcomes in cataract patients implanted with either premium primary IOLs or with dual implantation approach. Presented in the RANZCO NSW Congress in 2020, Newcastle, NSW, Australia. **4. Hassenstein A,** Niemeck F, Giannakakis K, Klemm M. [Toric add-on intraocular lenses for correction of high astigmatism after pseudophakic keratoplasty]. [Article in German]. *Ophthalmologie.* 2017 Jun;114(6):549–555. **5. Dombi Á,** Scharioth GB. AddOn®-Intraokularlinsen bei Patienten mit Pars-plana-Vitrectomie und Silikonöltamponade zum Ausgleich des hyperopen Shifts. [Article in German.] *Ophthalmol Chirurgie:* July 2019: 217–223.