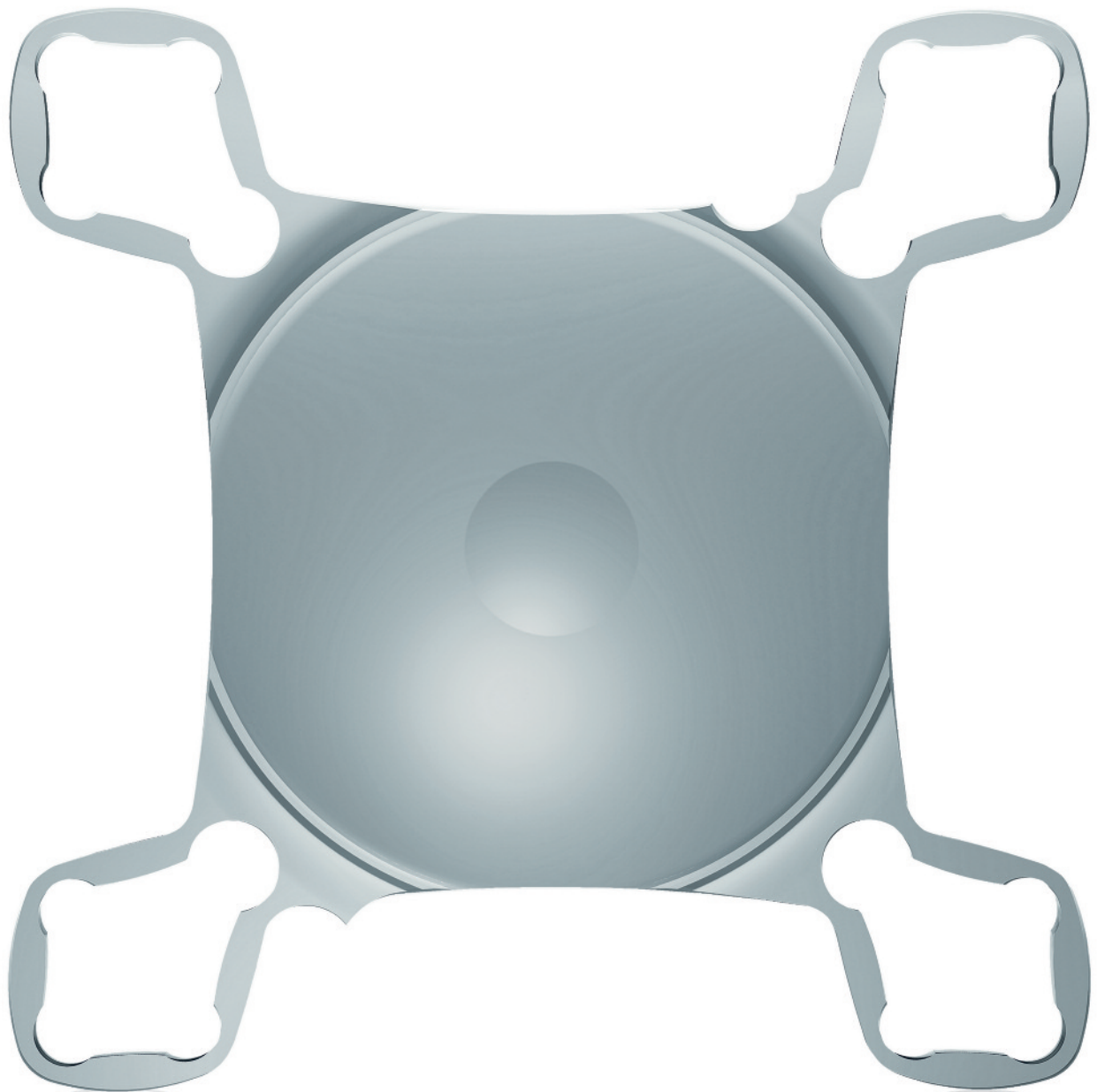


# SML

## THE MAGNIFIER IN THE EYE

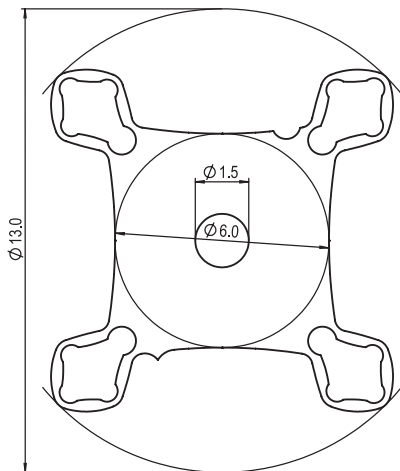
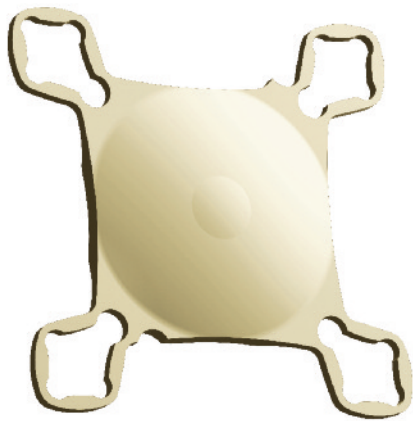
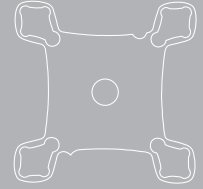


MEDICENTUR

# SML

## A45SML

# THE MAGNIFIER IN THE EYE



### Technical specification

#### Type

Single-piece foldable Intraocular Lens for implantation into the ciliary sulcus in addition to a primary IOL in the patient's pseudophakic eye

#### Optic

Bifocal – Aspheric

#### Available powers\*

0.0 D

#### Addition

+10.0 D

#### Sterilization

Steam

### Material

#### • A45SML

Copolymer of Hydrophilic Acrylic, 25% water content with UV absorber

#### • A45SMY

+ blue light filter

#### Refractive index

1.46

#### ABBE number

58

### Geometry

#### Overall diameter

13.0 mm

#### Optic diameter

6.0 mm

#### Haptic thickness

0.3 mm

#### Haptic angulation

0° – 4 closed loops, straight

### Storage

#### Temperature

+15 - +35 °C

#### Humidity

15 – 50%

#### Shelf life

5 years (from sterilization)

\* Other powers upon request.

EA-IMCA45SMLEN 06 201905